

MARINE 5

39 FOOT Fire/Rescue Marine Response Unit

Manufacture: Metal Craft Marine
Model: Fire Storm

- Twin Jet propulsion
- Maximum Speed: 38 knots
- Capable of operating in 30” of Water
- Operation for 8 uninterrupted Hours



- Providing 24 Hour Year Round Response Coverage



- Staffed by Department Personnel
- EMT's On Board
- Trained in Marine Operations by USCG

Based upon identified deficiencies in the ability to provide local water-based Fire and Rescue capabilities in the Middlesex County area covering the Raritan River, Raritan Bay and Arthur Kill, a total of \$500,000 was allocated by the Middlesex County Board of Freeholders through the 2005 Department of Homeland Security Grant Funding to purchase a Fire/Rescue Vessel to provide these capabilities. An Inter-Local Service Agreement was entered into between Middlesex County and the City of Perth Amboy to provide Staffing and Maintenance for the Vessel.

FOR EMERGENCY RESPONSE

Contact

Perth Amboy Communications Center

732-442-4400

Provide following information:

Incident Type (fire, water rescue, etc.)

Incident Location

On Scene Contact (Name & Phone Number)

Radio Frequency for Contact

Department Administration:

Wilda Diaz, Mayor

William J. Barcheski, Deputy Chief

Battalion Chief David J. Volk, Administration/Training

Lieutenant Timothy Simon—Bureau Commander

FIRE HEADQUARTERS

375 New Brunswick Avenue

Perth Amboy, New Jersey 08861

Phone: 732-324-3500

Dispatch: 732-442-4400

Fax: 732-826-0297

www.ci.perthamboy.nj.us/

Perth Amboy Fire Department Marine Operations Bureau



MARINE 5

FIREFIGHTING CAPABILITIES:

- 2,500 gpm Fire Flow
- Roof Mounted Electric Monitor
- 2 Foredeck Manual Monitors
- 1 Bow Monitor
- Foam Proportioning Unit
 - 55 Gallon Foam Tank
 - Ability to lift & secure 55 gallon Foam Drums on Aft Deck
- 5 inch Hose
- 3 inch Hose
- 2 1/2" Hose
- 600' 1 3/4 inch Hose
- Ladder
- Cold Water Dry Suits
- SCBA Units
- Pre-piped Breathing Air Supply System
- Hazardous Materials De-Con Station
- Level B Protective Clothing
- Air Monitoring Equipment

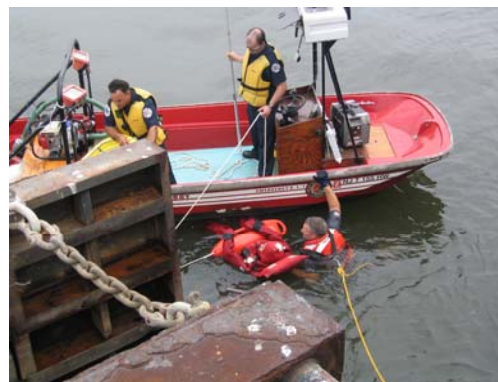
COMMUNICATIONS CAPABILITIES:

- VHF Low Band
- VHF
- UHF
- 800 MHz
- Satellite Capabilities
- On-Board Computer/Mobile Data Terminal
- Radar
- Chart Plotter
- GPS
- Forward Looking Inferred Video Unit



RESCUE CAPABILITIES:

- Semi-Automated defibrillator Unit
- Floatable Stokes
- Backboards
- Capability of Transporting 4 Patients on backboards within enclosed cabin
- Oxygen and medical Supplies
- Access to Remote Operated Underwater Search Camera through Perth Amboy Police Department



Water Rescue Car 6 and Additional Marine Units

CAR 6
1988 Dodge Utility Body

EQUIPMENT INVENTORY

14' ROW BOAT WITH MOTOR (5hp),
12' INFLATABLE WITH MOTOR
1 FLOATABLE PUMP, 150' 2 1/2" HOSE,
30' INFLATABLE RESCUE DOCK,
GENERATOR (2kw) WITH TWO QUARTZ LIGHTS,
2 COLD WATER IMMERSION SUITS,
2 ICE COMMANDEER SUITS, PERSONAL
FLOTATION DEVICES, 300' TEATHER LINE,
300' POLY PROPYLENE ROPE, 1 COLLAPSABLE
BOAT HOOK, 1 RESCUE CAN, 2 SCBA UNITS,
1 FIRST AID KIT.



MARINE UNITS

MARINE-4: 17' BOSTON WHALER

- In Water May—October
- 75 hp Outboard
- On Board Generator & Quartz Lighting



- UHF & VHF Radio Communications
- 250 gpm Pump

MARINE-2
PERSONAL
WATERCRAFT

- Yamaha
2 Person Unit
- In Water
May—October

